



HUTCH

Fleet Management Systems



“Hutch’s **GPS Tracking** is full featured and supplemented by **Diagnostic** reports.
IFTA Tax calculations took us less than 30 seconds to compute.
The **2-Way messaging** feature is convenient and **E-Log devices**
are designed for ease of use.”

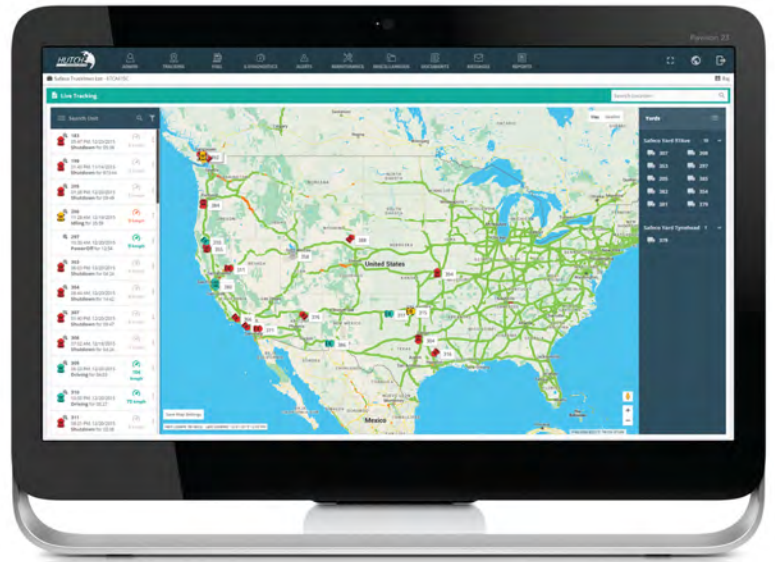
- Jason Bhangu, North Coast Trucking

Innovative products and solutions

Hutch Systems offers a World Class Fleet Management System to mid-size trucking companies throughout North America.

Our Web based solutions:

- Provide improved visibility into the status of your fleet assets.
- Help you effectively meet your compliance and regulatory obligations.
- Leverage both Cloud Computing and Telematics to improve utilization of your equipment.
- Provide a scalable platform to manage your fleet growth.



Hutch Subscription Pricing*

Basic	Pro	Premium
\$ 19 / Month	\$ 39 / Month	\$ 59 / Month
eLogs	e-Logs	e-Logs
eDVIR	eDVIR	eDVIR
	Tracking	Tracking
	Diagnostics	Diagnostics
		IFTA
		e-BOL/2-way messaging
		Maintenance

* Pricing does not include hardware cost and data charges which will be extra, based on the selected option.

Designed to exceed expectations



TRACKING

Share a specific vehicle status, location & ETA with your customers while ensuring real time visibility into engine performance, excessive speeding or temperatures inside your reefers. Review and replay routes taken while ensuring that you receive notification of all events including violations.



COMPLIANCE

We help you effectively meet your compliance and regulatory obligations including e-Logs, E-DVIR and automated IFTA calculations based on actual routes travelled by vehicles and thus eliminating the scope of non-compliance with regulations.



MAINTENANCE

Our maintenance solutions include e-Diagnostics that provide real time reports including engine fault codes and maintenance alerts. It allows you to pro-actively prepare an Equipment Maintenance Schedule and adopt Preventive Maintenance programs.



COMMUNICATION

Our communication system allows you to stay connected with your drivers through 2 way messaging service, sharing data between dispatchers and drivers seamlessly and sharing tracking links with customers to serve them better. Dispatchers also get real time driver availability based on the current status of their HOS.



PERFORMANCE

Our Dashboards allow you to track Over-speeding, Harsh Driving, Idle Fuel used, Engine hours, etc. as well as reports that include Driver Pay Per Mile, Vehicle utilization, PTO usage etc. Both driver as well as vehicle performance metrics can be tracked.

Key Differentiators



- Installation of hardware is easy and takes less than 10 minutes per truck
- IFTA taxes are calculated in less than 15 seconds and can be printed, signed and submitted
- Diagnostics information is provided in addition to location
- Invest heavily in product design and development
- Product design is based on customer inputs and feedback
- Hardware, Software and Services are offered as a market-ready integrated solution
- Your customers can be updated through a link that shows their consignment in real time on a map with all relevant information

“ Hutch is **different**. Their products are **uncomplicated**.

They are all about **customer-care**.

They **respond** when we have a need.

Their product training and service are **second to none**. ”

We would recommend them to any trucking company.

- Sam Sharma, Mountain Eagle Company



HUTCH SYSTEMS

(A division of Hutch Business Group Inc.)

Unit 201 2580 Cedar Park Place, Abbotsford, BC. Canada V2T 3S4.

Tel: 604.776.3564 | Fax: 604.243.6884 | eMail: sales@hutchsystems.com